

PART OF THE SW 1/4, SEC 20 & NW 1/4 SEC 29, T7N R1W S.L.B. & M.
ALSO PART OF LOTS 10 & 19 MOUNTAIN SHADOWS NO. 1

160

PINEWOOD ESTATES SUBDIVISION NO. 1

LOTS 1 TO 12

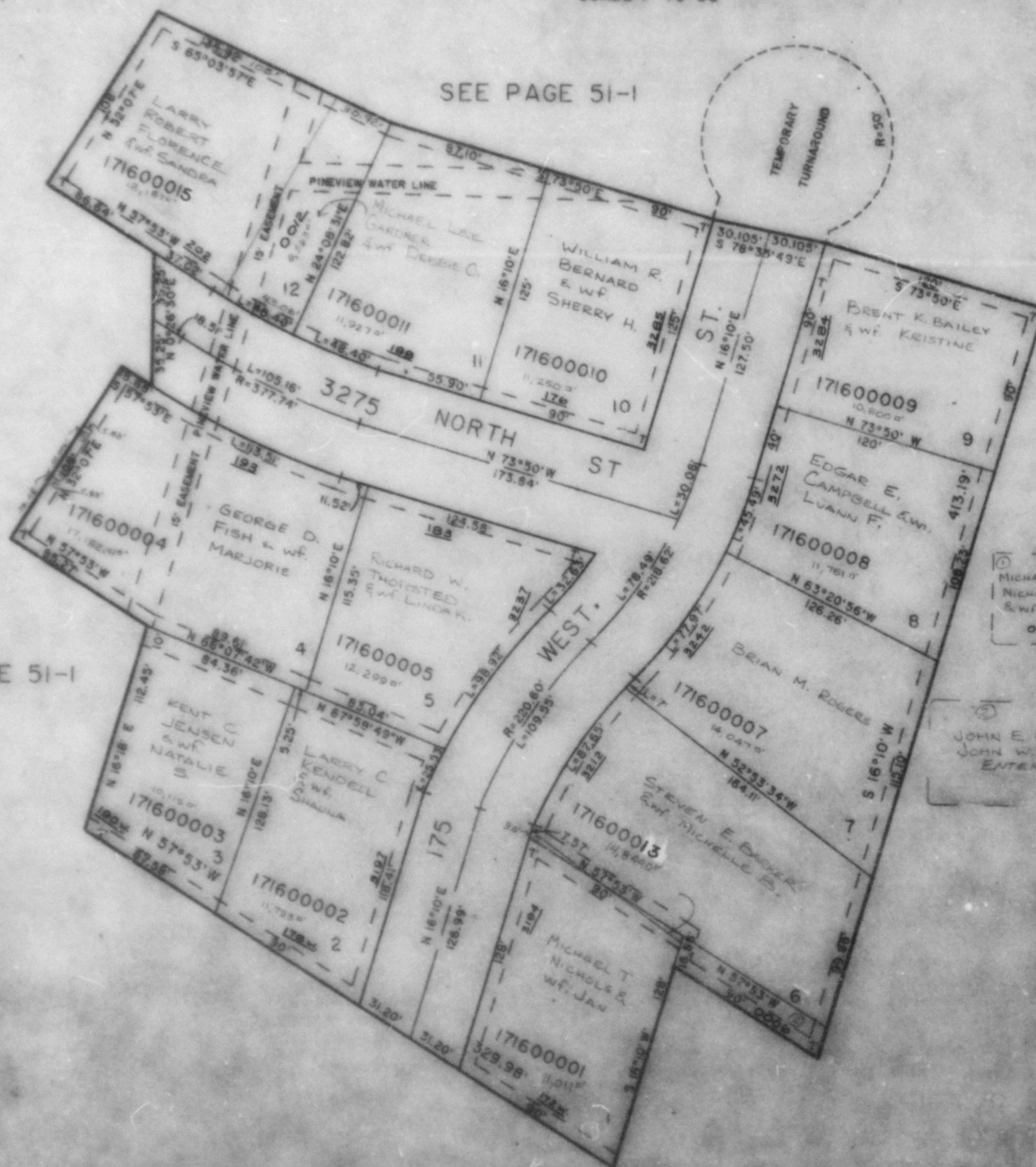
IN NORTH OGDEN CITY

SCALE 1" TO 50'

TAXING UNIT: 10

EXCEPT WHERE OTHERWISE
SHOWN ALL LOTS OWNED BY:
JOHN E. MALMBERG &
JOHN W. HANSEN ENTERPRISES

SEE PAGE 51-I



SEE PAGE 51-I

SEE PAGE 51-I